



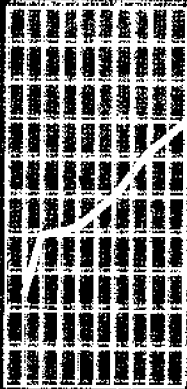
NEW ISSUE

June 1995

Voluntary Work

Australia

STATISTICS





EMBARGOED UNTIL 11.30 AM 15 APRIL 1996

NEW ISSUE

**VOLUNTARY WORK, AUSTRALIA
JUNE 1995**

**Dennis Trewin
Acting Australian Statistician**

AUSTRALIAN BUREAU OF STATISTICS

CATALOGUE NO. 4441.0

© Commonwealth of Australia 1996

Produced by the Australian Government Printing Service

CONTENTS

Page

Summary of findings 1

TABLES

Volunteers

1	States, Territories and Major Statistical Regions by sex	7
2	Age by sex	8
3	Relationship in household by sex	8
4	Birthplace by sex	9
5	Labour force status by sex	9
6	Occupation by sex	9
7	Number of organisations volunteered for by age	10
8	Field of voluntary work by sex	10

Hours worked

9	Field of voluntary work by sex	10
----------	--------------------------------	----

Volunteer rate

10	Field of voluntary work by capital cities and balance of Australia	11
11	Field of voluntary work by age by sex	11

Volunteers

12	Activity by age by sex	12
13	Activity by relationship in household	14
14	Activity by occupation and labour force status	15
15	Industry and labour force status by field of voluntary work	16
16	Field of voluntary work by length of time volunteering for organisation	16
17	Field of voluntary work by hours of voluntary work by sex	17
18	How long ago first volunteered by age by sex	18
19	Personal benefits gained through volunteering by labour force status	18
20	For less than 10 years: Relationship in household by how first became involved in voluntary work by sex	19
21	Reasons for becoming a volunteer by age	19
22	Reasons for becoming a volunteer by labour force status by sex	20
23	Activity by concerns about aspects of voluntary work	21
24	Expense incurred and whether reimbursement available	22
25	Type of training required by field of voluntary work	22
26	Field of voluntary work by personal benefits gained through volunteering	23

Explanatory notes 24

Technical note on data reliability 26

Glossary 28

Do you need additional data? 33

INQUIRIES

- *for further information about statistics in this publication, and the availability of related unpublished statistics, contact Michael Clarke on (02) 268 4498.*
- *for information about other ABS statistics and services, please refer to the last page of this publication.*



SUMMARY OF FINDINGS

TOTAL VOLUNTEERS

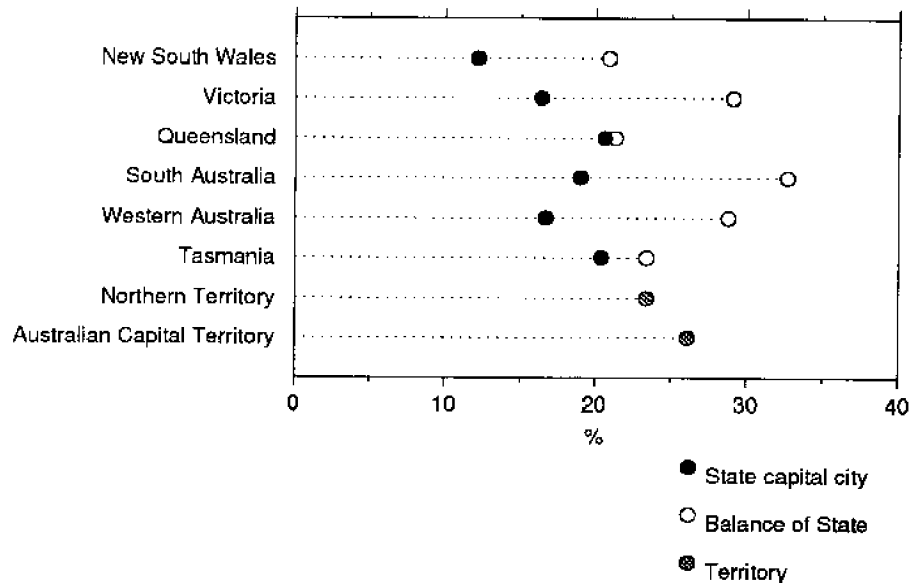
Voluntary work is an important contribution to national life. It meets needs within the community at the same time as it develops and reinforces social networks and cohesion. The Survey of Voluntary Work defined a volunteer as someone who willingly gave unpaid help in the form of time, service or skills, through an organisation or group.

In Australia, 2,639,500 persons, representing 19% of the civilian population aged 15 years and over, provided some form of voluntary work through an organisation or group during the 12 months ended June 1995 (table 1). These volunteers contributed approximately 433.9 million hours of voluntary work.

GEOGRAPHICAL COMPARISONS

The volunteer rate varied markedly across States and Territories, from 26% in the Australian Capital Territory down to 15% in New South Wales. Notwithstanding the relatively high rate for the ACT, people were more likely to volunteer if they lived outside a capital city. The volunteer rate was 16% for capital cities compared with 24% outside capital cities. The lowest volunteer rate, 12%, occurred in Sydney while the balance of South Australia (outside Adelaide) had the highest volunteer rate at 33%.

VOLUNTEER RATE BY MAJOR STATISTICAL REGION



WHO VOLUNTEERS

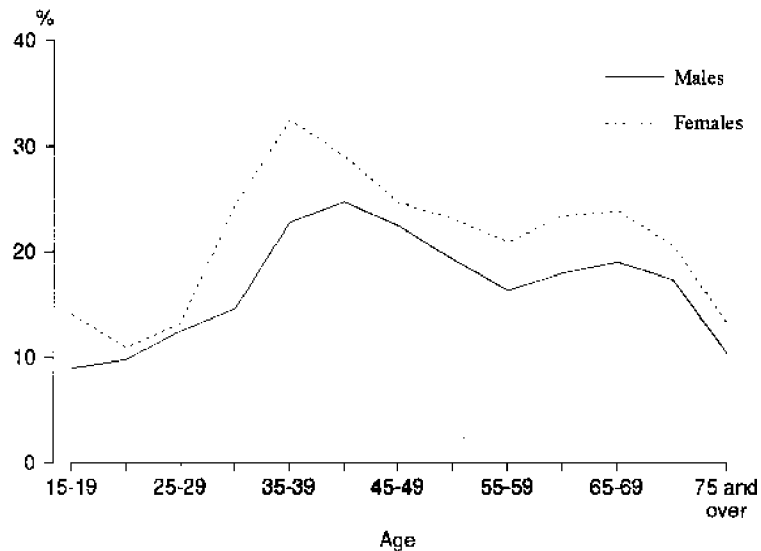
Volunteer rates varied across different groups in the population. They were higher for females than males (21% compared with 17%). This was the case regardless of age, occupation, family status or location.

The volunteer rates for people born in Australia and for those born in the main English speaking countries outside Australia were similar at 21% and 20%, respectively (table 4). These groups had a much higher participation in voluntary work than persons born in non-English speaking countries, whose volunteer rate was 9%.

The pattern of volunteer involvement varied with age and the life stage of the volunteer (table 2). People aged 35-44 years reported the highest volunteer rate of 27%. At these ages people are more likely to be married with children and their higher than average involvement in voluntary work reflects their family commitments. This is most marked for women. Females

partners with dependent children had a volunteer rate of 30% compared with 19% for those without dependent children (table 3). Lower rates for their male partners (23% for those with dependent children and 17% for those without) reflect men's much greater commitment to full time work. For women, part time employment has provided a means of balancing paid work with family commitments. This is reflected in the high rates of volunteer involvement among women employed part time (30%).

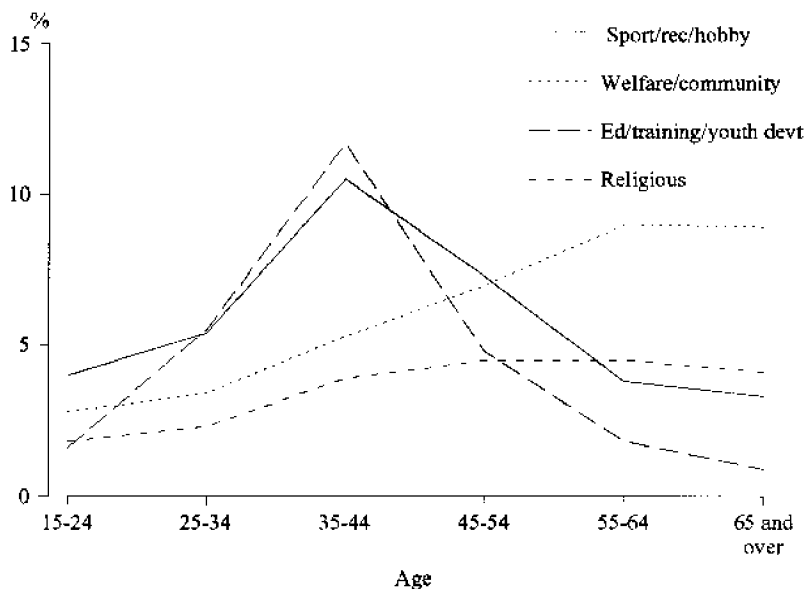
VOLUNTEER RATE BY AGE



AGE AND FIELD OF VOLUNTARY WORK

The age distribution of volunteer involvement varied across the various fields of voluntary work (table 11). For those who volunteered in educational, sporting or recreational fields, the volunteer rate peaked in the age group 35-44 years and declined thereafter. In contrast, the volunteer rate in the welfare and community fields increased with age up to the 55-64 year age group. The volunteer rate in the religious field increased with age up to 35-44 and was fairly steady thereafter. Again, this pattern is likely to reflect commitments to children's sport and school activities for the younger ages and to a wider community responsibility for the older ages.

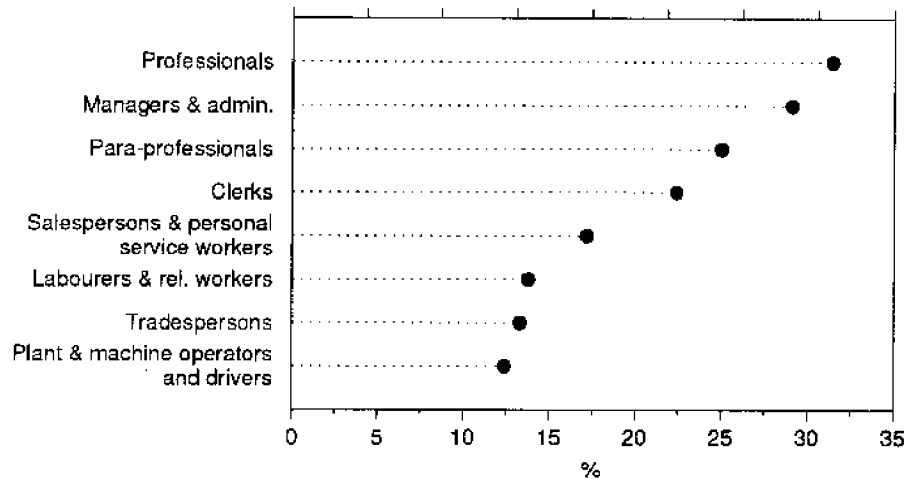
VOLUNTEER RATE BY AGE AND FIELD OF VOLUNTARY WORK



OCCUPATION

Almost two-thirds of the volunteers (65% or 1,704,500) were in either full-time or part-time paid employment (table 5). Among those volunteers who were employed, there was considerable variation in the rates of involvement among different fields of voluntary work. Professionals, and managers had volunteer rates of around 30%, more than twice those of machine operators and labourers (table 6).

VOLUNTEER RATE BY OCCUPATION

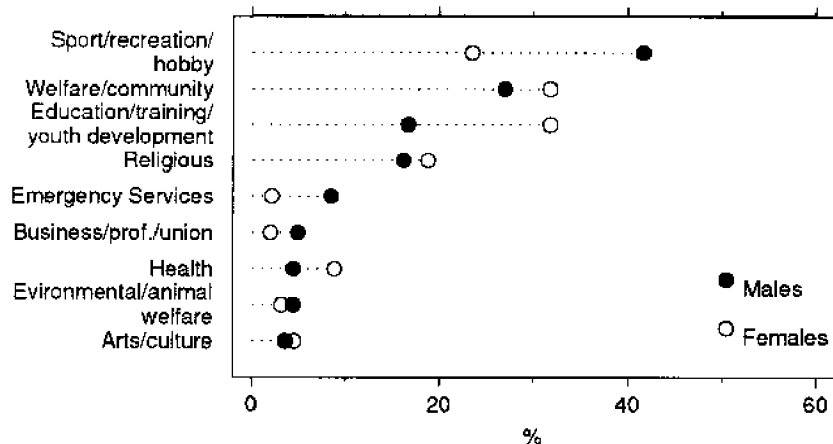


FIELDS OF VOLUNTARY WORK

Almost two-thirds of volunteers (66%) worked for one organisation only (table 7). Two fields of voluntary work claimed almost half of all volunteer hours (table 9): sport/recreation/hobby (24% of hours) and welfare/community (24%). Together with the religious (16%) and educational fields (14%), they accounted for almost 80% of all volunteer hours.

These four categories were also the largest in terms of number of volunteers. However, educational organisations involved substantially more volunteers than religious organisations (25% and 18% respectively).

PROPORTION OF VOLUNTEERS BY FIELD OF VOLUNTARY WORK

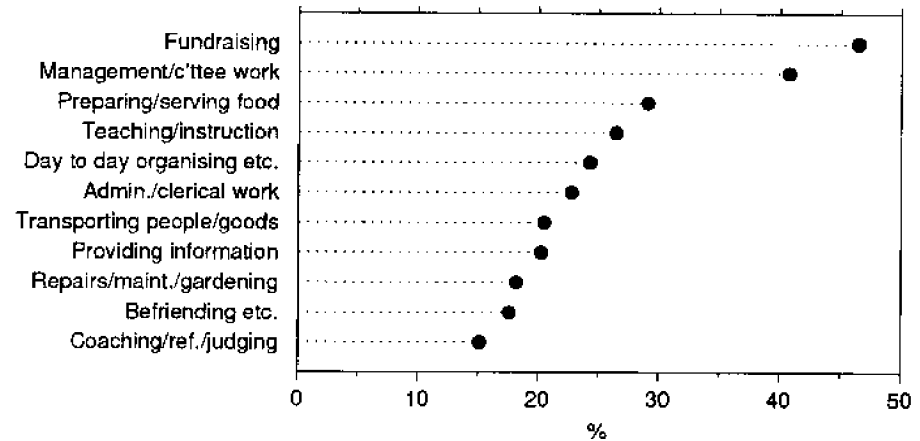


Male volunteers were most likely to be involved in sporting or recreational fields of voluntary work (42%). For females, welfare/community and educational areas involved the largest proportions of volunteers (32% each). Although there were more female than male volunteers overall, there were many more males than females working in the fields of sport, recreation and emergency services and for business, professional or union organisations.

ACTIVITIES PERFORMED

The activities most frequently reported by volunteers were fundraising (47%) and committee work (41%) (table 12).

SELECTED ACTIVITIES: PROPORTION OF VOLUNTEERS



Gender segregation observed among some occupations for paid work is also evident in voluntary work activities. For example, female volunteers were much more likely than male volunteers to be preparing and serving food (40% compared with 15% for males)

More male volunteers than females were involved in such activities as repairs, maintenance and gardening (30% of males, compared with 9% of females), search and rescue, first aid and fire fighting (10% compared with 3% for females), coaching and refereeing (21% versus 11%). For each of these activities, the actual number of volunteers, as well as the proportion, was greater for males than females.

RELATIONSHIP WITH PAID EMPLOYMENT

The nature of a person's voluntary work was closely related to their type of paid employment (tables 14 and 15).

Managers and administrators were more likely to be involved in management and committee work (59% compared with 41% for all volunteers), whereas tradespersons were much more likely to be involved in repairs, maintenance or gardening activities (38% as against 18% overall).

The industry in which a person was employed also strongly influenced their volunteer involvement. The following industries and fields of voluntary work showed a strong association:

- health and community services industries and volunteers in health fields (17% of volunteers from the industry, compared with 7% of volunteers overall);
- education industries and voluntary education, training or youth development work (39% compared with 25%);

- agriculture, forestry and fishing industries and emergency services (21% and 5%); and
- cultural and recreational services and voluntary work for arts/culture organisations (14% compared with 4%).

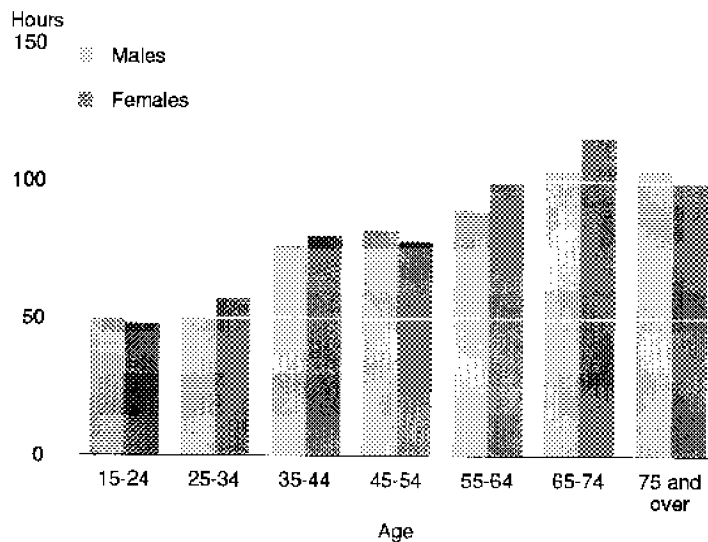
HOURS WORKED

The hours worked by individual volunteers varied considerably (table 17). Half of all volunteers worked for 75 hours or less in the preceding 12 months (that is, the median was 75 hours per year or about 6 hours per month). Just over a quarter (27%) of all volunteers spend 24 hours per year or less on voluntary work (2 hours or less per month). However, almost one-third of volunteers contributed 140 hours or more, and about one in seven performed at least 300 hours of voluntary work per year while at the extreme end of the scale about 2% of volunteers perform in excess of 1,000 hours of voluntary work per year.

Because most volunteers contributed relatively few hours, while a minority worked for a large number of hours, the average (or mean) is a misleading measure of hours worked by the average volunteer. The median is a more appropriate measure for purposes of comparison.

Although the number of volunteers was highest in the age group 35–44 years, median hours of voluntary work tended to increase steadily with age, up to the 65–74 age group where the median number of hours was 105. This correlates with the decrease in family and paid work commitments with advancing age.

MEDIAN HOURS OF VOLUNTARY WORK BY AGE



Median hours spent working in the fields of culture or recreation and sport were the highest of all the fields of voluntary work (60 hours). Volunteers for legal and political organisations tended to work the lowest hours, shown by a median of 27 hours.

Median hours worked by females were considerably greater than males for health (48 hours compared with 38 for males), educational (48 hours

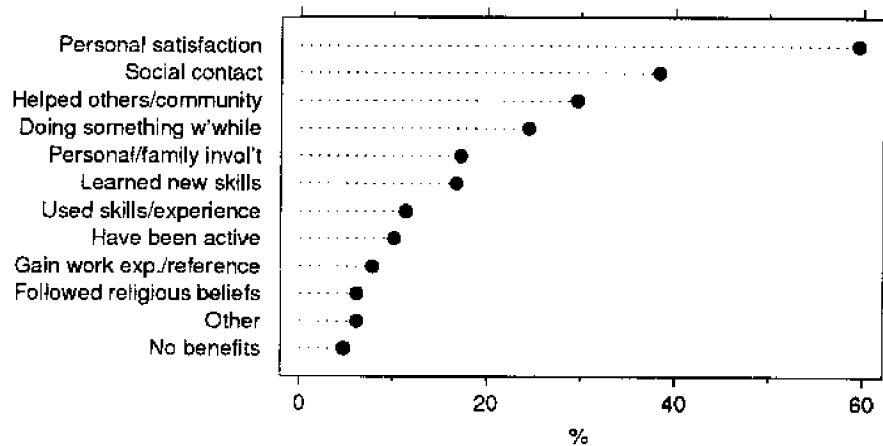
compared with 30 hours), religious (60 versus 50 hours) and environmental organisations (52 versus 30 hours).

The median hours were notably greater for males than females in arts/culture (78 compared with 52 hours) and foreign/international organisations (48 hours compared with 36 hours).

PERSONAL BENEFITS OF VOLUNTARY WORK

Voluntary work provides benefits to the community. This was acknowledged as the main reason for volunteering by 42% of people (table 21). However, volunteers also identified benefits to themselves with 59% reporting personal satisfaction and 38% social contacts (table 19).

PERSONAL BENEFITS: PROPORTION OF VOLUNTEERS



VOLUNTEER RECRUITMENT

Over half of those who first became involved in voluntary work in the last ten years were either asked to volunteer by someone (30%), or they or their family were already involved with the organisation (28%). Volunteers were rarely recruited through the media. Only 4% became involved in volunteering in response to a media report or an advertisement (table 20).

1

VOLUNTEERS: STATES, TERRITORIES AND MAJOR STATISTICAL REGIONS BY SEX

States, Territories and Major Statistical Regions	Males			Females			Persons		
	Number	Volunteer rate	Total hours	Number	Volunteer rate	Total hours	Number	Volunteer rate	Total hours
	'000s	%	million	'000s	%	million	'000s	%	million
New South Wales									
Sydney	147.1	10.1	22.6	213.9	14.2	30.9	361.0	12.2	53.5
Balance of NSW	157.1	18.1	23.3	210.4	23.6	38.3	367.5	20.9	61.6
<i>Total</i>	<i>304.2</i>	<i>13.1</i>	<i>45.9</i>	<i>424.3</i>	<i>17.7</i>	<i>69.2</i>	<i>728.5</i>	<i>15.4</i>	<i>115.1</i>
Victoria									
Melbourne	174.7	14.1	25.9	238.5	18.6	34.3	413.2	16.4	60.2
Balance of Vic.	127.9	26.5	19.9	156.8	31.6	26.0	284.6	29.1	45.9
<i>Total</i>	<i>302.6</i>	<i>17.6</i>	<i>45.7</i>	<i>395.2</i>	<i>22.2</i>	<i>60.4</i>	<i>697.8</i>	<i>20.0</i>	<i>106.1</i>
Queensland									
Brisbane	103.5	18.2	21.0	135.3	22.8	22.8	238.8	20.6	43.8
Balance of Qld	124.6	18.4	21.1	161.3	24.1	28.8	285.9	21.3	49.9
<i>Total</i>	<i>228.1</i>	<i>18.3</i>	<i>42.1</i>	<i>296.6</i>	<i>23.5</i>	<i>51.6</i>	<i>524.7</i>	<i>20.9</i>	<i>93.7</i>
South Australia									
Adelaide	69.5	16.6	13.7	93.5	21.4	17.3	163.0	19.0	31.0
Balance of SA	44.1	29.4	7.0	52.7	36.0	8.7	96.8	32.7	15.7
<i>Total</i>	<i>113.6</i>	<i>20.0</i>	<i>20.7</i>	<i>146.2</i>	<i>25.1</i>	<i>26.0</i>	<i>259.8</i>	<i>22.5</i>	<i>46.7</i>
Western Australia									
Perth	68.5	14.3	12.9	93.9	19.0	16.8	162.4	16.7	29.7
Balance of WA	48.2	26.6	8.0	51.1	31.1	8.3	99.4	28.8	16.3
<i>Total</i>	<i>116.7</i>	<i>17.7</i>	<i>20.9</i>	<i>145.0</i>	<i>22.1</i>	<i>25.1</i>	<i>261.8</i>	<i>19.9</i>	<i>46.0</i>
Tasmania									
Hobart	15.0	20.8	2.3	14.8	20.0	2.2	29.8	20.4	4.5
Balance of Tas.	22.3	21.2	3.5	26.9	25.6	4.8	49.2	23.4	8.3
<i>Total</i>	<i>37.3</i>	<i>21.1</i>	<i>5.8</i>	<i>41.6</i>	<i>23.3</i>	<i>7.0</i>	<i>79.0</i>	<i>22.2</i>	<i>12.8</i>
Northern Territory	13.8	22.3	2.5	14.7	24.6	2.7	28.5	23.4	5.2
Australian Capital Territory	26.6	23.7	3.9	32.9	28.4	4.3	59.5	26.1	8.2
Australia									
Capital cities ¹	605.0	13.9	102.3	822.7	18.3	128.7	1 427.7	16.2	231.0
Balance of Australia ²	537.9	21.3	85.3	673.9	26.6	117.6	1 211.9	24.0	202.9
Total	1 142.9	16.7	187.6	1 496.6	21.3	246.3	2 639.5	19.0	433.9

¹ State capitals and all of Australian Capital Territory.

² Balance of States and the Northern Territory.

2

VOLUNTEERS: AGE BY SEX

Age	Males			Females			Persons		
	Number	Volunteer rate	Total hours	Number	Volunteer rate	Total hours	Number	Volunteer rate	Total hours
	'000s	%	million	'000s	%	million	'000s	%	million
15-24	127.8	9.4	16.3	171.1	13.0	18.6	298.9	11.2	34.9
25-34	188.7	13.6	26.4	267.8	19.0	35.2	456.5	16.3	61.6
35-44	320.9	23.8	47.6	423.2	30.9	61.0	744.0	27.4	108.7
45-54	236.6	21.0	40.7	261.9	24.0	46.9	498.6	22.5	87.6
55-64	129.0	17.1	26.8	164.2	22.1	36.6	293.2	19.6	63.4
65 and over	140.0	15.7	29.8	208.4	18.9	47.9	348.3	17.4	77.7
Total	1 142.9	16.7	187.6	1 496.6	21.3	246.3	2 639.5	19.0	433.9

3

VOLUNTEERS: RELATIONSHIP IN HOUSEHOLD BY SEX

Relationship in household	Males			Females			Persons		
	Number	Volunteer rate	Total hours	Number	Volunteer rate	Total hours	Number	Volunteer rate	Total hours
	'000s	%	million	'000s	%	million	'000s	%	million
Family member									
Husband, wife or partner									
With dependants	467.3	23.1	66.4	591.1	29.9	78.4	1 058.4	26.4	144.8
Without dependants	359.5	17.3	66.4	394.1	19.2	73.7	753.6	18.2	140.1
Total	826.9	20.1	132.9	985.2	24.4	152.1	1 812.0	22.3	284.9
Lone parent	19.4	18.9	3.6	109.4	19.3	17.8	128.8	19.2	21.4
Dependent student ¹	44.1	10.8	3.5	65.9	15.1	5.2	110.0	13.0	8.6
Non-dependent child ¹	55.5	7.3	9.9	38.8	9.1	4.9	94.3	8.0	14.8
Other family person	10.2	7.1	1.2	19.9	11.8	3.3	30.1	9.6	4.5
Total	956.1	17.3	151.0	1 219.2	21.7	183.3	2 175.3	19.5	334.3
Non-family member									
Lone person	91.9	14.9	16.0	162.7	20.7	34.7	254.6	18.2	50.7
Not living alone	54.6	11.4	12.7	60.0	17.3	14.1	114.6	13.9	26.9
Total	146.6	13.4	28.8	222.7	19.7	48.9	369.2	16.6	77.6
Total relationship determined	1 102.6	16.7	179.8	1 441.9	21.3	232.2	2 544.5	19.0	411.9
Relationship not determined	40.3	16.3	7.8	54.7	20.3	14.1	95.0	18.4	22.0
Total	1 142.9	16.7	187.6	1 496.6	21.3	246.3	2 639.5	19.0	433.9

¹ For definitions see glossary.

4

VOLUNTEERS: BIRTHPLACE BY SEX

Birthplace	Males			Females			Persons		
	Number	Volunteer rate	Total hours	Number	Volunteer rate	Total hours	Number	Volunteer rate	Total hours
	'000s	%	million	'000s	%	million	'000s	%	million
Born in Australia	924.1	18.4	150.5	1 227.5	23.4	194.3	2 151.6	20.9	344.8
Born outside Australia									
Main English speaking countries ¹	129.2	17.5	23.7	161.0	22.6	34.1	290.3	20.0	57.8
Other countries	89.6	8.2	13.4	108.1	10.1	17.8	197.7	9.2	31.3
Total	1 142.9	16.7	187.6	1 496.6	21.3	246.3	2 639.5	19.0	433.9

¹ Comprises Canada, New Zealand, South Africa, United Kingdom and Ireland, and United States of America.

5

VOLUNTEERS: LABOUR FORCE STATUS BY SEX

Labour force status	Males			Females			Persons		
	Number	Volunteer rate	Total hours	Number	Volunteer rate	Total hours	Number	Volunteer rate	Total hours
	'000s	%	million	'000s	%	million	'000s	%	million
Employed									
Working full time	769.1	18.4	108.3	365.6	17.9	50.3	1 134.7	18.3	158.6
Working part time	107.3	20.7	18.3	462.5	29.6	62.7	569.8	27.4	81.0
Total	876.4	18.7	126.6	828.1	23.0	112.9	1 704.5	20.6	239.5
Unemployed									
Looking for full-time work	42.3	10.7	11.4	36.1	18.2	6.5	78.4	13.2	17.9
Looking for part-time work	*3.8	*8.4	0.3	22.5	27.1	2.5	26.4	20.4	2.8
Total	46.1	10.5	11.7	58.7	20.8	8.9	104.8	14.5	20.6
Not in the labour force	220.3	12.7	49.3	609.9	19.3	124.4	830.2	17.0	173.7
Total	1 142.9	16.7	187.6	1 496.6	21.3	246.3	2 639.5	19.0	433.9

6

VOLUNTEERS: OCCUPATION BY SEX

Occupation	Males			Females			Persons		
	Number	Volunteer rate	Total hours	Number	Volunteer rate	Total hours	Number	Volunteer rate	Total hours
	'000s	%	million	'000s	%	million	'000s	%	million
In the labour force									
Managers and administrators	185.1	28.1	26.5	66.9	32.4	11.0	251.9	29.1	37.5
Professionals	184.4	29.3	27.1	170.2	34.0	20.5	354.6	31.4	47.6
Para-professionals	54.8	22.7	8.5	60.7	27.4	9.4	115.5	25.0	17.9
Tradespersons	143.5	13.4	20.8	16.0	12.9	3.6	159.5	13.3	24.4
Clerks	57.6	20.3	7.2	242.9	22.9	32.0	300.5	22.4	39.2
Salespersons and personal service workers	82.1	16.8	14.1	155.0	17.5	18.9	237.1	17.2	33.0
Plant and machine operators and drivers	64.8	12.2	8.5	11.1	13.6	1.5	75.9	12.4	10.1
Labourers and related workers	95.6	11.6	14.9	77.8	18.1	11.0	173.4	13.8	25.9
Not available ¹	54.6	13.7	10.6	86.2	23.3	13.9	140.9	18.3	24.6
Total	922.5	18.0	138.3	886.8	22.9	121.9	1 809.3	20.1	260.2
Not in the labour force	220.3	12.7	49.3	609.9	19.3	124.4	830.2	17.0	173.7
Total	1 142.9	16.7	187.6	1 496.6	21.3	246.3	2 639.5	19.0	433.9

¹ Comprises unemployed persons who had not worked full time for 2 weeks or more in the last 2 years, or had never worked, and other persons in the labour force for whom occupation could not be coded.

7

VOLUNTEERS: NUMBER OF ORGANISATIONS VOLUNTEERED FOR BY AGE

	Age						Total
	15-24	25-34	35-44	45-54	55-64	65 and over	
Number of organisations	%	%	%	%	%	%	%
One	75.6	69.7	60.3	64.4	64.4	68.8	66.0
Two	18.3	21.4	24.5	21.7	23.5	19.8	22.0
Three	4.5	5.7	11.1	9.6	7.6	6.7	8.2
Four or more	*1.5	3.3	4.1	4.3	4.5	4.7	3.8
Total	100.0	100.0	100.0	100.0	100.0	100.0	100.0
Volunteers ('000s)	298.9	456.5	744.0	498.6	293.2	348.3	2 639.5

8

VOLUNTEERS: FIELD OF VOLUNTARY WORK

Organisational group ¹	Males		Females		Persons	
	Number		Number		Number	
	'000s	%	'000s	%	'000s	%
Sport/recreation/hobby	476.5	41.7	351.7	23.5	828.2	31.4
Welfare/community	308.4	27.0	476.2	31.8	784.7	29.7
Health	49.9	4.4	131.9	8.8	181.7	6.9
Emergency services	96.7	8.5	31.9	2.1	128.6	4.9
Education/training/youth development	191.3	16.7	476.6	31.8	668.0	25.3
Religious	184.8	16.2	281.3	18.8	466.1	17.7
Environmental/animal welfare	50.2	4.4	48.0	3.2	98.2	3.7
Business/professional/union	56.2	4.9	30.0	2.0	86.2	3.3
Law/justice/political	24.6	2.2	19.3	1.3	43.9	1.7
Arts/culture	41.1	3.6	66.9	4.5	108.0	4.1
Foreign/international	6.7	0.6	13.3	0.9	19.9	0.8
Total	1 142.9	100.0	1 496.6	100.0	2 639.5	100.0

¹ As a volunteer can work in more than one field of voluntary work, the figures for individual fields of voluntary work will not add to the total.

9

HOURS WORKED BY VOLUNTEERS: FIELD OF VOLUNTARY WORK

Field of voluntary work	Males		Females		Persons	
	Hours		Hours		Hours	
	million	%	million	%	million	%
Sport/recreation/hobby	63.7	33.9	40.9	16.6	104.6	24.1
Welfare/community	40.4	21.6	65.3	26.5	105.7	24.4
Health	6.9	3.7	17.1	7.0	24.0	5.5
Emergency services	10.5	5.6	4.3	1.7	14.8	3.4
Education/training/youth development	14.0	7.5	47.1	19.1	61.1	14.1
Religious	29.4	15.7	41.2	16.7	70.6	16.3
Environmental/animal welfare	4.3	2.3	8.1	3.3	12.4	2.9
Business/professional/union	4.6	2.5	3.2	1.3	7.8	1.8
Law/justice/political	2.0	1.1	1.7	0.7	3.7	0.9
Arts/culture	6.1	3.2	9.5	3.8	15.5	3.6
Foreign/international	*1.0	*0.5	1.6	0.6	2.6	0.6
Other	2.3	1.2	2.6	1.1	4.9	1.1
Not collected ¹	2.5	1.3	3.7	1.5	6.2	1.4
Total	187.6	100.0	246.3	100.0	433.9	100.0

¹ Field of voluntary work was only collected for the three organisations for which the volunteer worked the most hours.

10

VOLUNTEER RATE: FIELD OF VOLUNTARY WORK BY CAPITAL CITIES AND BALANCE OF AUSTRALIA

Field of voluntary work ³	Capital cities ¹	Balance of Australia ²	Total	Volunteers
	%	%	%	'000s
Sport/recreation/hobby	4.4	8.6	6.0	828.2
Welfare/community	4.5	7.6	5.6	784.7
Health	1.2	1.6	1.3	181.7
Emergency services	0.3	1.9	0.9	128.6
Education/training/youth development	4.3	5.6	4.8	668.0
Religious	3.2	3.6	3.4	466.1
Environmental/animal welfare	0.6	0.9	0.7	98.2
Business/professional/union	0.6	0.7	0.6	86.2
Law/justice/political	0.4	0.2	0.3	43.9
Arts/culture	0.6	1.1	0.8	108.0
Foreign/international	0.2	0.1	0.1	19.9
Other	0.2	0.5	0.3	40.1
Total	16.2	24.0	19.0	2 639.5

¹ State capitals and all of Australian Capital Territory.

² Balance of States and the Northern Territory.

³ As a volunteer can work in more than one field of voluntary work, the figures for individual fields of voluntary work will not add to the total.

11

VOLUNTEER RATE: FIELD OF VOLUNTARY WORK BY AGE

Field of voluntary work	Age						Total
	15-24	25-34	35-44	45-54	55-64	65 and over	
	%	%	%	%	%	%	%
MALES							
Sport/recreation/hobby	4.2	6.1	12.0	8.9	4.6	4.3	6.9
Welfare/community	1.8	2.8	4.5	5.7	7.1	7.4	4.5
Health	0.5	0.4	0.6	0.9	1.0	1.3	0.7
Emergency services	1.1	1.3	2.1	1.7	1.4	0.6	1.4
Education/training/youth development	1.1	2.0	6.7	3.7	1.4	0.6	2.8
Religious	1.4	2.0	3.1	3.5	3.7	3.3	2.7
Total males	9.4	13.6	23.8	21.0	17.1	15.7	16.7
Male volunteers ('000s)	127.8	188.7	320.9	236.6	129.0	140.0	1 142.9
FEMALES							
Sport/recreation/hobby	3.8	4.8	8.9	5.6	3.0	2.5	5.0
Welfare/community	3.9	4.1	6.0	8.4	11.0	10.2	6.8
Health	1.2	1.2	1.6	2.3	3.2	2.6	1.9
Emergency services	*0.3	0.5	0.6	0.5	*0.6	*0.2	0.5
Education/training/youth development	2.2	9.0	16.6	6.0	2.2	1.1	6.8
Religious	2.2	2.5	4.7	5.6	5.3	4.7	4.0
Total females	13.0	19.0	30.9	24.0	22.1	18.9	21.3
Female volunteers ('000s)	171.1	267.8	423.2	261.9	164.2	208.4	1 496.6
PERSONS							
Sport/recreation/hobby	4.0	5.4	10.5	7.3	3.8	3.3	6.0
Welfare/community	2.8	3.4	5.3	7.0	9.0	8.9	5.6
Health	0.9	0.8	1.1	1.6	2.1	2.0	1.3
Emergency services	0.7	0.9	1.4	1.2	1.0	0.4	0.9
Education/training/youth development	1.6	5.5	11.7	4.8	1.8	0.9	4.8
Religious	1.8	2.3	3.9	4.5	4.5	4.1	3.4
Total persons	11.2	16.3	27.4	22.5	19.6	17.4	19.0
All volunteers ('000s)	298.9	456.5	744.0	498.6	293.2	348.3	2 639.5

Activity ^a	Age						Total
	15-24	25-34	35-44	45-54	55-64	65 and over	
	%	%	%	%	%	%	%
MALES							
Fundraising	43.0	42.9	46.3	46.3	37.5	30.2	42.4
Management/committee work	26.2	40.5	50.7	57.1	47.2	42.8	46.2
Day to day organising/coordinating/supervising	26.6	25.4	29.0	29.0	18.2	17.4	25.5
Preparing/serving food	17.0	16.0	17.7	15.1	12.1	11.5	15.4
Administration/clerical work	16.1	19.8	25.6	26.8	20.0	22.4	22.8
Teaching/instruction	24.4	25.6	27.7	23.0	17.1	12.4	23.0
Transporting people/goods	16.7	20.8	24.5	22.1	15.3	22.3	21.2
Repairs/maintenance/gardening	24.6	29.8	35.3	31.3	29.1	25.2	30.4
Coaching/refereeing/judging	26.3	21.1	31.6	17.4	8.7	6.1	20.6
Recruiting	14.7	13.8	16.7	13.4	9.3	7.5	13.4
Lobbying/advocacy/policy research	3.7	9.2	12.7	11.6	8.0	7.0	9.7
Performing/media production	12.0	12.5	11.8	12.8	11.4	10.4	11.9
Search and rescue/first aid/fire fighting	15.0	13.6	10.1	10.7	n.p.	n.p.	10.3
Befriending/supportive listening/counselling	15.0	13.7	13.2	14.4	14.1	14.7	14.0
Providing information	19.8	21.6	24.1	27.2	17.8	18.4	22.4
Personal care/assistance	10.4	7.5	8.8	10.0	8.3	10.0	9.1
Protecting the environment	7.2	8.9	7.5	9.7	7.7	6.9	8.1
Guiding tours (museums, galleries, etc.)	*3.1	*2.0	2.7	2.4	*3.0	*3.4	2.7
Other	9.7	7.6	6.2	7.7	7.2	8.2	7.5
Male volunteers ('000s)	127.8	188.7	320.9	236.6	129.0	140.0	1 142.9
FEMALES							
Fundraising	40.6	52.5	56.0	47.8	45.7	45.9	49.6
Management/committee work	21.0	38.7	44.6	41.4	32.8	28.0	36.7
Day to day organising/coordinating/supervising	22.6	30.5	27.7	21.9	17.6	11.9	23.3
Preparing/serving food	25.9	40.4	46.6	40.5	37.5	36.2	39.6
Administration/clerical work	17.3	24.2	26.1	26.7	22.5	14.5	22.9
Teaching/instruction	27.5	39.3	39.8	24.2	19.9	10.0	29.2
Transporting people/goods	12.2	17.9	24.6	20.9	21.3	17.5	20.0
Repairs/maintenance/gardening	6.7	11.2	10.2	9.8	7.2	5.2	8.9
Coaching/refereeing/judging	20.7	13.5	15.7	7.3	3.4	*1.1	11.0
Recruiting	7.0	8.7	9.2	9.6	4.9	2.6	7.5
Lobbying/advocacy/policy research	4.3	7.3	7.8	6.5	4.7	*2.2	5.9
Performing/media production	13.7	14.4	13.2	10.1	9.7	4.4	11.4
Search and rescue/first aid/fire fighting	6.5	4.0	3.6	3.1	n.p.	n.p.	3.3
Befriending/supportive listening/counselling	20.5	18.0	18.2	23.2	25.4	20.5	20.4
Providing information	18.9	20.0	20.3	20.4	19.0	10.4	18.6
Personal care/assistance	16.7	12.2	10.9	14.1	15.8	12.4	13.1
Protecting the environment	5.5	3.1	3.7	4.0	3.8	*1.6	3.6
Guiding tours (museums, galleries, etc.)	*2.7	3.7	5.0	3.1	4.2	2.7	3.8
Other	7.5	6.2	7.2	7.6	11.8	16.4	8.9
Female volunteers ('000s)	171.1	267.8	423.2	261.9	164.2	208.4	1 496.6

For footnotes see end of table.

Activity ¹	Age						Total
	15-24	25-34	35-44	45-54	55-64	65 and over	
	%	%	%	%	%	%	%
PERSONS							
Fundraising	41.6	48.5	51.8	47.1	42.1	39.6	46.5
Management/committee work	23.2	39.4	47.2	48.9	39.2	34.0	40.8
Day to day organising/coordinating/supervising	24.3	28.4	28.3	25.3	17.9	14.1	24.3
Preparing/serving food	22.1	30.3	34.2	28.4	26.4	26.3	29.1
Administration/clerical work	16.8	22.4	25.9	26.8	21.4	17.6	22.8
Teaching/instruction	26.2	33.6	34.6	23.6	18.6	11.0	26.5
Transporting people/goods	14.1	19.1	24.6	21.5	18.7	19.4	20.5
Repairs/maintenance/gardening	14.4	18.9	21.0	20.0	16.8	13.3	18.2
Coaching/refereeing/judging	23.1	16.7	22.5	12.1	5.7	3.2	15.2
Recruiting	10.3	10.8	12.4	11.4	6.8	4.5	10.1
Lobbying/advocacy/policy research	4.1	8.0	9.9	8.9	6.1	4.1	7.6
Performing/media production	13.0	13.6	12.6	11.4	10.5	6.8	11.6
Search and rescue/first aid/fire fighting	10.1	8.0	6.4	6.7	4.7	1.6	6.3
Befriending/supportive listening/counselling	18.1	16.2	16.0	19.1	20.4	18.2	17.6
Providing information	19.3	20.6	21.9	23.6	18.4	13.6	20.3
Personal care/assistance	14.0	10.3	10.0	12.1	12.5	11.4	11.4
Protecting the environment	6.2	5.5	5.3	6.7	5.6	3.7	5.5
Guiding tours (museums, galleries, etc.)	2.9	3.0	4.0	2.8	3.7	2.9	3.3
Other	8.4	6.8	6.8	7.7	9.8	13.1	8.3
All volunteers ('000s)	298.9	456.5	744.0	498.6	293.2	348.3	2 639.5

¹ As a volunteer can participate in more than one activity, the figures for individual activities will not add to 100%.

Activity ²	Relationship in household								Total
	Husband/ wife/partner with dependants	Husband/ wife/partner without dependants	Lone parent	Dependent student ¹	Non- dependent child ¹	Lone person	Non- family member not living alone	Other ²	
	%	%	%	%	%	%	%	%	%
Fundraising	53.0	43.0	44.0	45.7	40.7	38.8	37.7	43.9	46.5
Management/committee work	47.7	40.4	33.4	15.9	33.3	33.3	33.8	42.2	40.8
Day to day organising/ coordinating/supervising	28.4	20.0	23.1	17.5	27.9	19.6	28.0	24.8	24.3
Preparing/serving food	34.8	24.6	39.1	18.2	21.4	25.8	23.2	26.6	29.1
Administration/clerical work	24.9	22.9	22.5	12.9	21.6	19.6	20.9	23.4	22.8
Teaching/instruction	34.4	18.2	29.7	24.7	28.7	16.7	27.8	25.1	26.5
Transporting people/goods	23.6	19.8	22.0	7.3	18.2	17.5	18.5	19.5	20.5
Repairs/maintenance/gardening	22.5	16.7	10.9	10.8	17.7	12.4	17.3	18.1	18.2
Coaching/refereeing/judging	20.3	7.9	14.0	26.0	24.2	8.9	16.9	11.2	15.2
Recruiting	11.4	8.7	9.2	8.1	14.8	7.5	12.1	9.5	10.1
Lobbying/advocacy/policy research	9.4	6.8	8.3	*4.0	5.1	5.2	7.7	5.1	7.6
Performing/media production	12.1	10.6	12.1	10.7	17.1	9.5	14.4	11.2	11.6
Search and rescue/first aid/fire fighting	6.2	5.6	5.1	7.3	15.0	4.2	9.6	7.4	6.3
Befriending/supportive listening/ counselling	15.4	18.2	24.4	14.8	14.8	18.9	23.9	22.3	17.6
Providing information	20.7	20.9	18.8	14.3	17.9	17.0	25.7	22.8	20.3
Personal care/assistance	9.6	11.0	16.0	11.4	13.7	12.1	15.5	16.5	11.4
Protecting the environment	5.4	5.6	*3.0	4.8	7.2	5.0	9.4	5.8	5.5
Guiding tours (museums, galleries, etc.)	3.6	2.8	4.1	*1.8	*2.3	3.0	*3.9	4.8	3.3
Other	6.4	9.3	9.1	8.0	10.4	12.4	7.8	8.4	8.3
Total volunteers ('000s)	1 058.4	753.6	128.8	110.0	94.3	254.6	114.6	125.2	2 639.5

¹ See Glossary for definitions.

² Includes other family persons who were usual residents of households where relationship was determined, usual residents of households where relationship was not determined, visitors to private dwellings and persons enumerated in non-private dwellings.

³ As a volunteer can participate in more than one activity, the figures for individual activities will not add to 100%.

Activity ²	Occupation										
	Managers and administrators	Professionals	Para-professionals	Tradespersons	Clerks	Salespersons and personal service workers	Plant and machine operators and drivers	Labourers and related workers	Not available ¹	Not in the labour force	Total
	%	%	%	%	%	%	%	%	%	%	%
Fundraising	54.0	45.2	49.5	42.5	53.0	52.9	49.6	46.2	38.6	42.0	46.5
Management/committee	59.1	55.8	45.3	38.1	45.6	39.8	40.4	32.9	30.3	30.8	40.8
Day to day organising/ coordinating/supervising	30.1	29.0	26.6	23.6	25.5	27.3	26.1	22.8	23.1	19.3	24.3
Preparing/serving food	24.3	20.8	25.0	18.9	36.8	31.5	20.4	31.7	30.8	33.2	29.1
Administration/clerical work	25.0	31.3	24.3	16.8	29.0	22.5	20.2	16.9	22.7	18.8	22.8
Teaching/instruction	23.5	36.9	38.0	23.0	28.0	28.3	20.0	21.8	30.0	22.0	26.5
Transporting people/goods	22.3	18.6	25.0	23.2	22.2	19.5	25.9	22.5	17.9	18.9	20.5
Repairs/maintenance/ gardening	30.6	17.5	16.3	37.5	11.7	14.1	34.6	24.3	19.5	11.9	18.2
Coaching/refereeing/judging	18.1	21.6	21.1	22.1	17.4	18.5	25.4	17.8	12.6	6.6	15.2
Recruiting	15.2	13.0	12.5	12.8	10.5	12.7	16.0	9.5	9.2	5.2	10.1
Lobbying/advocacy/policy research	14.1	14.4	10.3	4.9	6.6	7.9	7.5	4.7	5.5	4.0	7.6
Performing/media production	12.8	18.6	11.8	8.9	12.0	14.7	11.0	9.2	11.7	8.2	11.6
Search and rescue/ first aid/fire fighting	11.7	4.9	10.0	12.3	3.9	7.9	13.2	11.7	6.6	2.3	6.3
Befriending/supportive listening/counselling	13.9	18.3	21.4	10.8	19.0	19.6	12.4	15.3	19.7	18.9	17.6
Providing information	24.0	28.0	26.1	18.9	21.2	21.9	19.8	17.7	19.7	15.1	20.3
Personal care/assistance	7.5	9.1	13.7	7.1	10.4	15.4	10.9	11.4	15.8	12.5	11.4
Protecting the environment	10.6	5.7	5.4	7.3	3.9	4.8	6.9	8.2	6.1	3.6	5.5
Guiding tours (museums, galleries, etc.)	3.1	3.3	*3.6	3.2	4.0	3.5	*1.5	*2.3	*3.0	3.4	3.3
Other	6.5	6.5	6.1	9.9	6.3	5.6	*4.6	7.8	11.8	11.0	8.3
Volunteers ('000s)	251.9	354.6	115.5	159.5	300.5	237.1	75.9	173.4	140.9	830.2	2 639.5

¹ Comprises unemployed persons who had not worked full time for 2 weeks or more in the last 2 years, or had never worked, and other persons in the labour force whom occupation could not be coded.

² As a volunteer can participate in more than one activity, the figures for individual activities will not add to 100%.

15

VOLUNTEERS: INDUSTRY AND LABOUR FORCE STATUS BY FIELD OF VOLUNTARY WORK

Industry	Field of voluntary work ¹									Volunteers '000s
	Sport/re- creation/ hobby	Welfare/ community	Health	Emer- gency services	Educa- tion/ training	Religious	Environ- mental/ animal	Arts/ culture	Other ²	
	%	%	%	%	%	%	%	%	%	
In the labour force										
Agriculture, forestry and fishing	42.1	33.5	4.0	20.6	22.0	16.8	9.3	3.6	9.7	141.8
Manufacturing	45.1	18.9	4.1	7.1	25.1	13.7	*2.1	*1.3	6.6	147.6
Construction	40.0	17.3	*4.1	8.9	30.8	18.3	1.5	3.0	*3.8	101.6
Wholesale trade	48.3	23.5	*3.1	*4.3	26.4	14.9	*2.8	*1.9	*4.8	86.9
Retail trade	37.5	26.8	4.7	5.6	22.3	15.7	2.7	3.5	6.2	185.8
Accommodation, cafes and restaurants	34.9	29.9	*4.3	n.p.	28.0	*7.1	*5.6	*4.8	*7.6	54.9
Transport and storage	46.8	19.8	*5.3	*4.3	20.5	16.9	*3.1	*3.8	*6.7	57.2
Finance and insurance	36.3	23.5	*5.7	n.p.	26.3	18.1	n.p.	*5.2	*5.6	58.7
Property and business services	33.7	26.0	3.3	3.7	28.9	16.6	5.5	4.4	13.9	175.8
Government administration and defence	44.7	19.9	*1.7	6.5	22.9	15.6	*4.3	*4.1	11.5	90.4
Education	33.1	22.1	3.6	*1.5	39.2	23.1	4.3	6.0	9.0	211.7
Health and community services	23.4	29.2	16.8	3.4	27.6	18.0	3.4	*1.6	7.9	185.1
Cultural and recreational services	36.9	27.2	*7.0	*2.3	23.9	*6.4	*5.4	13.5	*7.9	47.1
Personal and other services	33.4	29.5	*7.1	*5.3	24.9	21.5	*3.2	n.p.	9.2	61.8
Other industries ³	47.6	19.9	n.p.	11.4	19.6	11.2	*5.3	n.p.	8.1	61.9
Not available ⁴	26.9	31.2	n.p.	4.8	25.9	15.6	n.p.	5.1	7.8	140.9
Total	36.7	25.2	5.7	6.0	26.9	16.6	4.0	3.8	8.2	1 809.3
Not in the labour force	19.7	39.5	9.6	2.5	21.8	20.0	3.2	4.7	4.7	830.2
Total	31.4	29.7	6.9	4.9	25.3	17.7	3.7	4.1	7.1	2 639.5

¹ As a volunteer can work in more than one field of voluntary work, the figures for individual fields of voluntary work will not add to 100%.

² Includes Business/professional/Union, Law/justice/political and Foreign/international.

³ Comprises Mining, Electricity, gas and water supply, and Communication services.

⁴ Comprises unemployed persons who had not worked full time for 2 weeks or more in the last 2 years, or had never worked, and other persons in the labour force for whom industry could not be coded.

16

VOLUNTEERS: FIELD OF VOLUNTARY WORK BY LENGTH OF TIME VOLUNTEERING FOR ORGANISATION

Field of voluntary work ²	Length of time volunteering for organisation ¹					Total
	Less than 1 year	1 to under 3 years	3 to under 5 years	5 to under 10 years	10 years or more	
	%	%	%	%	%	'000s
Sport/recreation/hobby	17.3	24.3	20.1	22.0	24.6	828.2
Welfare/community	20.1	22.8	18.8	18.4	27.4	784.7
Health	21.1	27.8	16.6	19.1	19.1	181.7
Emergency services	13.3	19.7	13.1	19.7	36.0	128.6
Education/training/youth development	25.6	25.3	20.6	24.2	13.8	668.0
Religious	10.6	15.5	14.6	17.3	44.3	466.1
Environmental/animal welfare	29.6	26.6	19.7	15.6	14.0	98.2
Business/professional/union	16.7	26.7	14.7	23.4	23.8	86.2
Law/justice/political	23.0	19.9	14.3	23.3	22.3	43.9
Arts/culture	16.6	22.6	22.6	18.4	25.0	108.0
Other ³	21.7	21.4	23.4	14.5	22.5	59.7
Total	23.4	27.5	22.8	24.7	28.3	2 639.5

¹ Volunteers can be counted in more than one category. Therefore figures for individual categories will not add to 100%.

² As a volunteer can work in more than one field of voluntary work, the figures for individual fields of voluntary work will not add to 100%.

³ Includes Foreign/international.

Field of voluntary work ²	Hours of voluntary work in preceding 12 months ¹						Total	'000s	Median hours
	Less than 20	20-39	40-79	80-139	140-299	300 or more			
	%	%	%	%	%	%			
MALES									
Sport/recreation/hobby	19.4	16.1	20.5	16.4	15.9	11.9	100.0	476.5	60
Welfare/community	28.7	16.5	16.9	14.0	13.2	10.7	100.0	308.4	48
Health	31.5	19.9	15.7	11.4	10.3	11.1	100.0	49.9	38
Emergency services	32.1	17.2	17.2	12.4	12.9	8.2	100.0	96.7	40
Education/training/youth development	35.8	19.6	18.6	11.4	10.5	4.2	100.0	191.3	30
Religious	24.5	18.6	15.9	13.6	15.1	12.3	100.0	184.8	50
Environment/animal welfare	38.7	16.9	15.4	12.0	10.4	6.5	100.0	50.2	30
Business/professional/union	26.1	25.4	21.2	8.2	13.3	5.9	100.0	56.2	36
Law/justice/political	37.8	21.8	15.8	6.6	9.8	8.2	100.0	24.6	26
Arts/culture	19.9	11.4	19.2	19.3	17.3	12.9	100.0	41.1	78
Foreign/international	19.7	23.8	9.8	23.6	7.4	15.8	100.0	6.7	48
Other	23.4	24.5	12.8	15.4	15.7	8.2	100.0	17.5	48
Total males	19.8	14.7	17.1	16.0	17.6	14.7	100.0	1 142.9	74
FEMALES									
Sport/recreation/hobby	21.0	15.7	22.7	17.0	16.0	7.6	100.0	351.7	60
Welfare/community	24.5	18.0	18.1	13.6	14.6	11.3	100.0	476.2	52
Health	27.6	14.7	17.5	15.2	13.5	11.5	100.0	131.9	48
Emergency services	31.3	23.2	18.4	6.9	9.5	10.7	100.0	31.9	36
Education/training/youth development	22.7	17.5	23.7	18.6	12.0	5.6	100.0	476.6	48
Religious	19.7	16.1	18.4	18.2	15.9	11.8	100.0	281.2	60
Environment/animal welfare	25.4	14.3	21.7	9.5	12.4	16.7	100.0	48.0	52
Business/professional/union	23.5	16.9	29.5	12.6	9.1	8.4	100.0	30.0	48
Law/justice/political	36.1	17.4	18.8	10.9	8.3	8.6	100.0	19.3	32
Arts/culture	21.5	16.3	22.4	12.7	15.4	11.7	100.0	66.9	52
Foreign/international	32.5	20.1	18.9	10.6	10.1	7.9	100.0	13.3	36
Other	24.6	18.9	24.0	10.0	12.6	9.9	100.0	22.7	48
Total females	17.4	14.4	19.4	16.8	17.8	14.1	100.0	1 496.6	75
PERSONS									
Sport/recreation/hobby	20.1	15.9	21.4	16.6	15.9	10.0	100.0	828.2	60
Welfare/community	26.1	17.4	17.6	13.7	14.1	11.1	100.0	784.7	50
Health	28.6	16.2	17.0	14.2	12.6	11.4	100.0	181.7	48
Emergency services	31.9	18.7	17.5	11.0	12.1	8.8	100.0	128.6	36
Education/training/youth development	26.5	18.1	22.2	16.5	11.5	5.2	100.0	668.0	40
Religious	21.6	17.1	17.4	16.4	15.6	12.0	100.0	466.1	54
Environment/animal welfare	32.2	15.7	18.4	10.8	11.4	11.5	100.0	98.2	42
Business/professional/union	25.2	22.4	24.1	9.7	11.8	6.8	100.0	86.2	40
Law/justice/political	37.1	19.9	17.1	8.5	9.1	8.4	100.0	43.9	27
Arts/culture	20.9	14.4	21.2	15.2	16.1	12.2	100.0	108.0	60
Foreign/international	28.2	21.4	15.8	14.9	9.2	10.6	100.0	20.0	40
Other	24.1	21.3	19.1	12.3	14.0	9.2	100.0	40.1	48
Total	18.5	14.6	18.4	16.5	17.8	14.4	100.0	2 639.5	75

¹ Refers to hours worked for all organisations.

² As a volunteer can work in more than one field of voluntary work, the figures for individual fields of voluntary work will not add to 100%.

18

VOLUNTEERS: HOW LONG AGO FIRST VOLUNTEERED BY AGE

	Age			Total
	15-34	35-64	65 and over	
<i>How long ago first volunteered</i>	%	%	%	%
MALES				
Less than 1 year	14.2	4.2	*3.0	6.8
1 to under 6 years	37.5	19.0	13.8	23.5
6 to under 10 years	16.5	11.2	6.7	12.1
10 years or more	31.7	65.7	76.4	57.6
<i>Total males</i>	100.0	100.0	100.0	100.0
Male volunteers ('000s)	316.5	686.5	140.0	1 142.9
FEMALES				
Less than 1 year	16.8	4.8	3.0	8.1
1 to under 6 years	41.9	21.3	14.7	26.4
6 to under 10 years	16.4	14.3	8.5	14.1
10 years or more	24.8	59.5	73.8	51.3
<i>Total females</i>	100.0	100.0	100.0	100.0
Female volunteers ('000s)	438.9	849.4	208.4	1 496.6
PERSONS				
Less than 1 year	15.8	4.5	3.0	7.5
1 to under 6 years	40.1	20.3	14.3	25.2
6 to under 10 years	16.5	12.9	7.8	13.2
10 years or more	27.7	62.3	74.9	54.0
<i>Total</i>	100.0	100.0	100.0	100.0
All volunteers ('000s)	755.4	1 535.8	348.3	2 639.5

19

VOLUNTEERS: PERSONAL BENEFITS GAINED THROUGH VOLUNTEERING BY LABOUR FORCE STATUS

	Labour force status				Total
	Employed		Unemployed	Not in the labour force	
	Working full time	Working part time			
<i>Personal benefits¹</i>	%	%	%	%	%
Personal/family involvement	17.7	23.2	11.9	13.0	17.2
Personal satisfaction	60.2	58.8	57.1	58.9	59.4
Social contact	37.2	37.1	37.6	40.6	38.3
Followed religious beliefs	5.2	6.0	6.0	7.5	6.1
Have been active	9.4	10.1	9.2	11.0	10.1
Learned new skills	17.8	20.1	24.8	12.0	16.7
Doing something worthwhile	22.8	26.0	28.3	25.1	24.4
Helped others/community	29.5	29.9	27.5	29.8	29.6
Gained work experience/reference	7.0	12.1	17.4	4.6	7.8
Used skills/experience	12.6	13.2	11.4	8.3	11.3
Other	6.4	6.8	5.9	5.5	6.1
No benefits	5.5	3.8	*4.4	4.2	4.7
Volunteers ('000s)	1 134.7	569.8	104.8	830.2	2 639.5

¹ Volunteers can state more than one benefit. Therefore figures for individual categories will not add to 100%.

20

VOLUNTEERS FOR LESS THAN 10 YEARS: RELATIONSHIP IN HOUSEHOLD BY HOW FIRST BECAME INVOLVED IN VOLUNTARY WORK

Relationship in household	How first became involved in voluntary work						Total	'000s
	Knew someone involved	Asked to by someone	Self/family involved in organisation	Saw ad/report in media	Sought out activity on own	Other		
	%	%	%	%	%	%	%	
MALES								
Family member	23.3	32.5	26.7	3.2	11.1	3.1	100.0	393.0
Non-family member	29.7	26.9	19.4	*2.5	18.0	*3.4	100.0	76.3
Total males	24.5	31.5	25.5	3.1	12.1	3.3	100.0	484.5
FEMALES								
Family member	17.8	30.5	32.3	4.0	12.6	2.8	100.0	599.8
Non-family member	28.1	22.5	16.5	7.6	19.5	5.9	100.0	104.0
Total females	19.6	29.0	29.8	4.8	13.6	3.3	100.0	728.5
PERSONS								
Family member	20.0	31.3	30.1	3.7	12.0	2.9	100.0	992.8
Non-family member	28.8	24.3	17.7	5.4	18.9	4.8	100.0	180.2
Total	21.6	30.0	28.1	4.1	13.0	3.3	100.0	1 213.0

21

VOLUNTEERS: REASONS FOR BECOMING A VOLUNTEER BY AGE

Reasons for becoming a volunteer ¹	Age						Total
	15-24	25-34	35-44	45-54	55-64	65 and over	
	%	%	%	%	%	%	%
Personal/family involvement	23.2	37.8	47.4	34.5	21.1	16.6	33.5
Personal satisfaction	30.3	25.6	26.2	27.0	25.6	26.2	26.6
Social contact	14.1	16.6	15.2	15.2	16.4	17.3	15.7
Religious beliefs	7.8	8.3	8.0	10.0	11.7	11.7	9.3
To be active	11.7	10.6	9.6	8.4	13.2	16.3	11.0
To learn new skills	14.7	8.1	5.9	5.2	3.7	2.0	6.4
To do something worthwhile	19.1	21.8	20.9	23.2	29.1	28.9	23.3
Help others/community	34.8	38.1	37.9	45.6	48.9	47.6	41.5
Gain work experience/reference	16.0	6.9	3.5	2.2	1.0	0.7	4.6
Use skills/experience	12.3	12.0	12.2	12.6	9.6	8.2	11.5
Felt obliged/just happened	11.5	13.1	14.9	12.7	11.2	11.1	12.9
Other	6.5	5.5	6.4	7.4	8.2	5.9	6.6
Volunteers ('000s)	298.9	456.5	744.0	498.6	293.2	348.3	2 639.5

¹ Volunteers may give more than one reason. Therefore figures for individual categories will not add to 100%.

<i>Reasons for becoming a volunteer¹</i>	<i>Labour force status</i>				<i>Total</i>
	<i>Employed</i>		<i>Unemployed</i>	<i>Not in the labour force</i>	
	<i>Working full time</i>	<i>Working part time</i>			
<i>%</i>	<i>%</i>	<i>%</i>	<i>%</i>	<i>%</i>	
MALES					
Personal/family involvement	35.6	28.3	25.0	18.5	31.2
Personal satisfaction	26.8	22.7	30.6	26.7	26.5
Social contact	15.1	13.4	17.0	11.7	14.3
Religious beliefs	7.9	8.9	*5.3	10.2	8.4
To be active	8.6	9.7	13.7	14.0	10.0
To learn new skills	5.9	10.3	*9.9	2.9	5.9
To do something worthwhile	19.6	22.2	25.6	24.6	21.1
Help others/community	41.4	34.5	44.9	43.2	41.2
Gain work experience/reference	2.4	8.5	13.2	2.3	3.4
Use skills/experience	13.1	11.5	16.9	9.2	12.3
Felt obliged/just happened	15.2	14.9	13.2	13.2	14.7
Other	7.2	8.3	*8.4	7.5	7.4
Male volunteers ('000s)	769.1	107.3	46.1	220.3	1 142.9
FEMALES					
Personal/family involvement	33.8	44.7	30.9	29.6	35.3
Personal satisfaction	29.5	27.7	22.0	24.9	26.7
Social contact	14.9	16.7	15.3	18.2	16.8
Religious beliefs	9.4	9.0	8.3	11.2	10.0
To be active	9.6	10.4	13.4	14.2	11.9
To learn new skills	7.4	7.7	9.2	5.4	6.8
To do something worthwhile	24.0	23.0	22.7	27.1	24.9
Help others/community	42.1	39.9	38.9	43.4	41.8
Gain work experience/reference	5.7	7.0	16.5	3.3	5.6
Use skills/experience	13.7	11.5	*6.1	9.0	10.8
Felt obliged/just happened	14.5	11.7	11.3	9.5	11.5
Other	6.6	6.0	9.0	5.2	6.0
Female volunteers ('000s)	365.6	462.5	58.7	609.9	1 496.6
PERSONS					
Personal/family involvement	35.0	41.6	28.3	26.7	33.5
Personal satisfaction	27.6	26.7	25.8	25.4	26.6
Social contact	15.0	16.1	16.1	16.5	15.7
Religious beliefs	8.4	9.0	7.0	11.0	9.3
To be active	8.9	10.3	13.5	14.2	11.0
To learn new skills	6.4	8.2	9.5	4.8	6.4
To do something worthwhile	21.0	22.9	24.0	26.5	23.3
Help others/community	41.6	38.9	41.5	43.3	41.5
Gain work experience/reference	3.5	7.3	15.1	3.1	4.6
Use skills/experience	13.3	11.5	10.8	9.1	11.5
Felt obliged/just happen	15.0	12.3	12.1	10.5	12.9
Other	7.0	6.4	8.8	5.8	6.6
All volunteers ('000s)	1 134.7	569.8	104.8	830.2	2 639.5

¹ Volunteers may give more than one reason. Therefore figures for individual categories will not add to 100%.

Activity ²	Concerns ¹						Amount of time required
	Travel/ distance/ location	Risk of injury/ ill health	Insurance cover	Legal responsibility	Amount/ adequacy of training	Amount/ adequacy of supervision or guidance	
	%	%	%	%	%	%	%
Fundraising	8.6	7.6	7.6	13.2	6.3	3.1	13.3
Management/committee work	10.6	8.0	10.2	18.2	7.8	3.7	18.5
Day to day organising/coordinating/supervising	12.2	10.6	10.8	19.6	9.2	5.4	20.7
Preparing/serving food	8.3	7.4	6.4	11.0	6.3	3.0	11.8
Administration/clerical work	11.9	8.7	11.4	19.8	8.6	4.8	19.5
Teaching/instruction	11.4	9.5	9.7	16.3	9.3	5.0	16.3
Transporting people/goods	11.3	10.9	10.9	18.2	8.2	4.1	17.1
Repairs/maintenance/gardening	7.5	10.1	10.1	16.4	6.7	3.5	14.4
Coaching/refereeing/judging	12.6	12.8	12.7	20.8	9.8	4.7	16.1
Recruiting	16.3	13.3	16.0	27.1	10.6	6.5	26.3
Lobbying/advocacy/policy research	18.8	12.2	16.4	32.3	14.4	7.2	31.6
Performing/media production	14.8	9.6	11.6	21.7	10.2	5.6	25.6
Search and rescue/first aid/fire fighting	13.1	18.8	14.9	24.4	10.8	6.4	15.2
Befriending/supportive listening/counselling	13.2	9.0	8.6	14.5	10.2	5.5	17.0
Providing information	15.8	10.9	12.5	21.0	10.3	5.8	23.2
Personal care/assistance	13.7	11.7	10.0	16.2	10.5	5.6	14.9
Protecting the environment	17.0	15.1	15.5	26.2	12.7	5.7	22.8
Guiding tours (museums, galleries etc.)	17.6	13.3	14.7	20.3	9.7	5.2	21.0
Other	8.4	5.5	5.6	6.9	4.0	1.9	7.8
Total	7.3	6.1	5.9	10.5	4.9	2.4	10.4

Activity ²	Concerns ¹ — continued						Total
	Costs	Lack of recognition	Lack of support	Relationship with paid staff	Other	No concerns	
	%	%	%	%	%	%	'000s
Fundraising	9.4	7.5	16.1	2.3	1.1	57.6	1 227.0
Management/committee work	10.8	9.3	19.6	3.3	1.3	48.0	1 078.0
Day to day organising/coordinating/supervising	13.7	11.9	23.1	3.6	1.6	44.3	640.3
Preparing/serving food	8.9	7.2	15.6	2.2	0.9	60.4	769.2
Administration/clerical work	13.6	10.8	21.4	4.2	1.6	45.3	602.6
Teaching/instruction	10.5	9.4	16.3	3.2	1.3	51.7	699.7
Transporting people/goods	12.9	9.5	18.7	2.9	1.1	49.3	541.8
Repairs/maintenance/gardening	10.0	8.5	17.9	2.8	1.4	54.5	480.9
Coaching/refereeing/judging	12.6	9.9	21.3	2.3	1.2	44.0	400.5
Recruiting	21.1	15.0	30.4	4.8	2.3	31.7	265.4
Lobbying/advocacy/policy research	21.8	17.3	27.3	6.9	2.6	29.3	199.4
Performing/media production	17.5	13.1	25.0	4.4	1.7	39.0	306.1
Search and rescue/first aid/fire fighting	14.8	12.8	23.1	5.5	1.9	39.6	167.2
Befriending/supportive listening/counselling	13.1	9.9	16.5	3.7	1.7	50.7	465.8
Providing information	16.4	12.6	24.0	4.2	1.7	39.9	534.6
Personal care/assistance	13.1	11.0	18.0	4.2	1.8	50.1	299.9
Protecting the environment	20.0	14.8	25.7	7.1	3.1	34.4	146.2
Guiding tours (museums, galleries etc.)	15.4	11.4	21.0	4.8	1.2	42.9	86.9
Other	6.7	4.9	9.0	2.6	2.0	69.2	219.1
Total	6.7	5.7	11.6	2.1	1.1	64.2	2 639.5

¹ Volunteers with concerns may have more than concern. Therefore figures for individual categories will not add to 100%.

² As a volunteer can participate in more than one activity, the figures for individual activities will not add to the total.

24

VOLUNTEERS WHO INCURRED EXPENSES: EXPENSE INCURRED AND WHETHER REIMBURSEMENT AVAILABLE

	Reimbursement available		Reimbursement not available ¹		Total		
	Number	Proportion of volunteers who incurred expense	Number	Proportion of volunteers who incurred expense	Number	Proportion of volunteers who incurred expense	Proportion of all volunteers
Expense incurred ²	'000s	%	'000s	%	'000s	%	%
Phone calls	259.6	22.4	899.4	77.6	1 159.0	100.0	43.9
Postage	179.3	36.7	309.5	63.3	488.8	100.0	18.5
Uniform	18.1	16.9	88.7	83.1	106.8	100.0	4.0
Travel costs	172.6	14.9	984.0	85.1	1 156.6	100.0	43.8
Meals	41.6	14.7	241.3	85.3	282.9	100.0	10.7
Training	23.6	18.9	101.1	81.1	124.7	100.0	4.7
Other	35.2	24.6	107.7	75.4	142.9	100.0	5.4
Total with expenses	441.5	27.4	1 168.3	72.6	1 609.8	100.0	100.0

¹ Includes volunteers who did not know, or had never asked, whether reimbursement was available.

² Volunteers may incur a range of different expenses. Therefore figures for individual categories will not add to 100%.

25

VOLUNTEERS: TYPE OF TRAINING REQUIRED BY FIELD OF VOLUNTARY WORK

	Field of voluntary work ¹					Total
	Sport/recreation/ hobby	Welfare/ community	Education/ training/youth	Religious	Other ²	
Training required	%	%	%	%	%	%
Type³						
Committee	4.2	3.6	4.3	2.0	4.2	3.3
Communication	2.8	4.2	4.7	5.2	5.2	3.8
Computing	2.4	2.3	3.9	2.1	3.8	2.5
Legal rights and	1.8	2.4	2.5	1.2	2.8	1.9
Teaching skills	6.7	2.3	7.4	4.8	3.2	4.6
	2.2	1.1	1.4	*0.7	2.2	1.4
Counselling skills	1.7	5.0	3.6	7.4	4.0	3.7
Other	7.1	4.9	4.4	4.4	9.6	5.8
Total	19.6	16.3	20.2	18.4	23.0	18.0
None	80.4	83.7	79.8	81.6	77.0	82.0
All volunteers	828.2	784.7	668.0	466.1	652.3	2 639.5

¹ As a volunteer can work in more than one field of voluntary work, the figures for individual fields of voluntary work will not add to the total.

² Includes Health, Emergency services, Environmental welfare, Business/professional/union, Law/justice/political, Arts/culture and Foreign/international.

³ Volunteers may specify more than one type of training. Therefore figures will not add to 100%.

<i>Field of voluntary work²</i>	<i>Personal benefits¹</i>					
	<i>Personal/family involvement</i>	<i>Personal satisfaction</i>	<i>Social contact</i>	<i>Have been active</i>	<i>Learned new skills</i>	<i>Doing something worthwhile</i>
	%	%	%	%	%	%
Sport/recreation/hobby	21.9	60.5	44.3	13.1	18.2	20.4
Welfare/community	9.4	61.6	41.0	9.4	14.1	27.5
Health	11.4	64.8	32.3	9.7	14.6	31.6
Emergency services	11.2	58.9	40.4	12.1	33.5	25.2
Education/training/youth development	33.0	57.5	40.1	10.1	19.7	26.6
Religious	12.5	63.6	34.6	9.4	13.3	26.1
Environmental/animal welfare	10.4	62.0	34.7	12.3	25.6	31.2
Business/professional/union	10.4	63.1	42.8	9.4	26.5	26.4
Arts/culture	10.4	61.7	43.1	12.7	26.3	25.3
Foreign/international	*7.9	56.4	33.9	4.1	18.6	26.1
Other	7.8	63.9	35.0	9.7	22.3	24.7
Total	17.2	59.4	38.3	10.1	16.7	24.4

<i>Field of voluntary work²</i>	<i>Personal benefits¹ — continued</i>					
	<i>Helped others/community</i>	<i>Gained work experience/reference</i>	<i>Used skills/experience</i>	<i>Other³</i>	<i>No benefits</i>	<i>Total</i>
	%	%	%	%	%	'000s
Sport/recreation/hobby	25.0	6.8	12.5	7.2	4.7	828.2
Welfare/community	35.7	7.6	9.2	9.6	4.7	784.7
Health	36.5	10.1	11.8	11.0	4.0	181.7
Emergency services	40.2	9.2	13.3	6.7	*2.9	128.6
Education/training/youth development	29.5	9.8	13.1	10.6	3.8	668.0
Religious	33.8	5.1	11.6	34.6	2.5	466.1
Environmental/animal welfare	28.5	10.5	15.4	9.9	*4.0	98.2
Business/professional/union	30.1	15.8	19.4	19.6	*4.4	86.2
Arts/culture	30.8	12.3	19.1	9.2	*3.8	108.0
Foreign/international	25.9	10.4	*7.9	*5.8	1.8	19.9
Other	28.3	10.4	12.7	13.5	7.2	83.6
Total	29.6	7.8	11.3	12.1	4.7	2 639.5

¹ Volunteers can state more than one benefit. Therefore figures for individual categories will not add to 100%.

² Volunteers may specify more than one type of training. Therefore figures for individual categories will not add to total.

³ Includes 'Followed religious beliefs'.

EXPLANATORY NOTES

INTRODUCTION

1 This publication contains results from a Survey of Voluntary Work which was conducted throughout Australia in June 1995 as a supplementary topic of the ABS Monthly Population Survey (MPS).

2 Information was collected from individuals about the field volunteered for, voluntary activities performed, time spent volunteering, perceived benefits of volunteering and reasons for volunteering.

3 The MPS was conducted during the two weeks commencing Monday 12 June 1995.

4 Information was sought from approximately 56,000 persons who responded to the MPS, of whom about 54,500 (97%) responded to the supplementary topic.

SCOPE

5 The survey was conducted via interviews for all persons aged 15 years and over who had undertaken voluntary work in the last 12 months, except:

- members of the permanent defence forces;
- certain diplomatic personnel of overseas governments, customarily excluded from censuses and surveys;
- overseas residents in Australia;
- members of non-Australian defence forces (and their dependants) stationed in Australia;
- residents of some non-private dwellings such as hospitals and jails (included in the MPS); and
- boarding school pupils.

REVISION TO DATA

6 Preliminary results from the Survey of Voluntary Work were released in *Voluntary Work, Australia, Preliminary, June 1995* (4440.0). There have been minor revisions to some figures in the current publication. These have resulted from further editing of the data, and from changes to the estimation procedure to better reflect the population covered by the survey.

DATA INTERPRETATION

7 In some instances a person may be counted in more than one cell of a table. For example, volunteers may provide more than one reason for volunteering, they can participate in more than one activity or express a number of concerns about voluntary work. However, each volunteer is only counted once in the table total. Therefore the figures for individual categories will add to more than the total.

8 Volunteers were asked to provide information on their work in up to three different organisations. This may also result in them contributing to more than one cell of a table. For example, suppose a volunteer worked for two sport/recreation/hobby organisations and one welfare/community organisation. In a table showing field of voluntary work, this volunteer would be counted once under each of the headings sport/recreation/hobby and welfare/community. Again, however, the volunteer would only be counted once in the table total.

9 Some other studies of voluntary work and related topics have used 'number of episodes' as a method of counting, where a person is counted for every organisation or activity they were involved in. Care should be taken in comparing estimates from such studies with data from this publication.

10 Industry and occupation data were not collected in the June 1995 MPS of which the Survey of Voluntary Work was part. Where possible, the data were obtained from information gathered about the same respondents in the May or August MPS. Where the information was unavailable from these surveys, the respondent's industry and occupation were coded as not available.

DEFINITIONS

11 The glossary at the end of this publication contains definitions of concepts directly relating to the subject matter of this survey. Definitions of other items can be found in the glossary of the monthly publication *Labour Force, Australia* (6203.0).

EFFECTS OF ROUNDING

12 Estimates have been rounded and discrepancies may occur between sums of the component items and totals.

RELATED PUBLICATIONS

13 Other ABS publications which may be of interest include:

Tasmanian Statistical Indicators, June 1994 (1303.6)

Involvement in Sport Australia, March 1993 (6285.0)

Work in Selected Culture/Leisure Activities, Australia, March 1993
(6281.0)

Unpaid Work and the Australian Economy, 1992 (5240.0)

How Australians Use their Time, 1992 (4153.0)

Community and Volunteer Work, South Australia, 1988 (4402.4)

Voluntary Community Work, New South Wales, Preliminary, 1986
(4403.1)

SYMBOLS AND OTHER
USAGES

n.a. not available
n.p. not available for publication but included in totals where applicable
* estimate is subject to a relative standard error greater than 25%
.. not applicable
— nil occurrences or rounded to zero

TECHNICAL NOTE ON DATA RELIABILITY

ESTIMATION PROCEDURE Estimates from this survey were derived using a complex ratio estimation procedure, which ensured that they conform to an independently estimated distribution of the population by age, sex and State, rather than to the age, sex and State distribution among respondents.

RELIABILITY OF ESTIMATES Estimates in this publication are subject to non-sampling and sampling errors.

Non-sampling errors Non-sampling errors may arise as a result of errors in the reporting, recording or processing of the data and can occur even if there is a complete enumeration of the population. Non-sampling errors can be introduced through: inadequacies in the questionnaire; non-response; inaccurate reporting by respondents; errors in the application of survey procedures; incorrect recording of answers; and errors in data entry and processing.

It is difficult to measure the size of the non-sampling errors and the extent of these errors could vary considerably in significance from survey to survey and from question to question. However, every effort is made in the design of the survey and development of survey procedures to minimise the effect of these errors.

Sampling errors Sampling error is the error which occurs by chance because the data were only obtained from a sample, not the entire population.

ESTIMATES OF SAMPLING ERROR One measure of the variability of estimates which occurs as a result of surveying only a sample of the population is the *standard error* (See table below).

There are about two chances in three (67%) that a survey estimate is within one standard error of the figure that would have been obtained if all persons had been included in the survey. There are about nineteen chances in twenty (95%) that the difference will be less than two standard errors.

Linear interpolation should be used to calculate the standard error of estimates falling between the sizes of estimates listed in the table.

The standard error can also be expressed as a percentage of the estimate and this is known as the *relative standard error* (RSE). The RSE is determined by dividing the standard error of an estimate $SE(x)$ by the estimate x and expressing it as a percentage. That is:

$$RSE(x) = \frac{100SE(x)}{x}$$

(where x is the estimate). The relative standard error is a useful measure in that it provides an immediate indication of the percentage errors likely to have occurred due to sampling.

Proportions and percentages formed from the ratio of two estimates are also subject to sampling error. The size of the error depends on the accuracy of both the numerator and the denominator. The formula for the relative standard error of a proportion or percentage is:

$$RSE (x/y) = \sqrt{[RSE(x)]^2 + [RSE(y)]^2}$$

For all tables in this publication, only estimates with relative standard errors of 25% or less, and percentages based on such estimates, are considered sufficiently reliable for most purposes. However, estimates and percentages with relative standard errors greater than 25% have been included, preceded by the symbol * to indicate that they are subject to high standard errors and should be used with caution.

STANDARD ERRORS OF ESTIMATES OF PERSONS

Size of estimate	Standard error									Relative standard error Aust. %
	NSW	Vic.	QLD	SA	WA	Tas.	NT	ACT	Aust.	
	no.	no.	no.	no.	no.	no.	no.	no.	no.	
200	230	200	220	140	160	130	210	103.7
500	450	410	380	310	340	230	240	200	350	70.5
1 000	650	590	530	440	480	320	320	270	520	51.9
1 500	790	720	650	530	580	380	390	320	650	43.2
2 000	910	840	750	610	660	430	440	360	760	37.8
2 400	990	910	810	660	720	470	480	390	830	34.7
3 000	1 100	1 000	910	740	800	520	530	430	940	31.2
4 000	1 250	1 150	1 050	840	910	580	610	480	1 100	27.2
5 000	1 400	1 300	1 150	930	1 000	630	670	530	1 200	24.4
6 000	1 550	1 400	1 250	1 000	1 100	680	730	570	1 350	22.3
8 000	1 750	1 600	1 400	1 150	1 250	760	830	640	1 550	19.3
10 000	1 950	1 800	1 550	1 250	1 350	820	920	700	1 750	17.3
20 000	2 650	2 450	2 150	1 700	1 800	1050.0	1250.0	920	2 400	12.1
30 000	3 150	2 900	2 550	2 000	2 150	1200.0	1550.0	1100.0	2 900	9.7
40 000	3 550	3 300	2 850	2 250	2 400	1300.0	1750.0	1200.0	3 350	8.3
50 000	3 900	3 600	3 150	2 450	2 650	1400.0	1950.0	1300.0	3 700	7.4
100 000	5 200	4 800	4 150	3 200	3 500	1700.0	2700.0	1700.0	5 000	5.0
200 000	6 800	6 300	5 500	4 100	4 550	2000.0	3750.0	2150.0	6 800	3.4
300 000	7 900	7 300	6 400	4 750	5 300	2150.0	..	2450.0	8 000	2.7
400 000	8 800	8 100	7 100	5 300	5 900	2300.0	9 000	2.3
500 000	9 600	8 800	7 700	5 700	6 300	2400.0	9 800	2.0
1 000 000	12 300	11 300	9 900	7 200	8 100	12 900	1.3
2 000 000	15 600	14 200	12 500	9 000	10 300	16 700	0.8
5 000 000	21 000	19 100	16 900	23 000	0.5

GLOSSARY

Activities	Activities performed in the preceding 12 months were collected for each organisation for which a volunteer worked, up to a maximum of three organisations. When a volunteer worked for more than three organisations in the preceding 12 months, activity information was only collected for the three organisations for which the volunteer worked the most hours. Examples of the activities to which respondents' answers were coded included:
<i>Administration/ clerical work</i>	Office work, typing and word processing, answering phones, filing, basic bookkeeping.
<i>Befriending/supportive listening/counselling</i>	Includes providing companionship, staffing help lines.
<i>Day-to-day organising/ co-ordinating/supervising</i>	This category contrasts with 'management/committee work' in that it focuses on the ongoing, day to day side of managing an organisation, operation or service.
<i>Fundraising</i>	Includes a range of activities directed predominantly towards assisting organisations to raise money for their own programs or for those of another organisation, such as door knocking, selling buttons on button day, making or selling items on a stall or in a charity shop.
<i>Guiding tours</i>	Include showing visitors through art galleries or museums. This category does not refer to activities associated with the Girl Guides.
<i>Management/committee work</i>	This category refers to being a participant in management committees and functions, involving making decisions about the direction and operation of an organisation. Examples include: sitting on a board, being an office bearer, management activities for school P & C Associations or resident groups, being a member of the management board of a community welfare organisation, treasurer for the local church, managing a service or program, program planning.
<i>Performing/ media production</i>	Includes producing newsletters, pamphlets and other printed material.
<i>Preparing/serving food</i>	Work for Meals on Wheels was coded to both preparing/serving food and transporting people/goods.
<i>Protecting the environment</i>	Includes activities such as work for Clean-up Australia, animal rescue, bush regeneration, tree planting, bush track maintenance.
<i>Recruiting</i>	Includes conducting campaigns for recruiting volunteers. Recruiting volunteers for a fundraising program was coded under recruitment rather than fundraising.
<i>Teaching/instruction</i>	Includes classroom assistance given by people other than qualified teachers, for example parents.
<i>Transporting people/goods</i>	See Preparing/serving food.
<i>Other</i>	Activities not classified elsewhere. In some tables and graphs, some of the above activities have also been included in this category due to small numbers of responses. This is indicated by a footnote.

Benefits gained through volunteering	Personal benefits, if any, gained through volunteering were recorded for each volunteer. These do not necessarily relate to any specific field of voluntary work or reference period. For categories see <i>Reasons for becoming a volunteer</i> , below.
Concerns about aspects of voluntary work	The reference period for this item is the preceding 12 months. Concerns relate to the full experience of volunteering over that time. Information reported here may therefore not apply to every organisation for which the volunteer worked. Examples include:
<i>Insurance cover</i>	Volunteers may be unsure of, or worried about, whether they have the same insurance cover to protect them on the job as paid employees.
<i>Legal responsibility</i>	Some volunteers may be concerned about the legal responsibilities entailed in being, for example, a board member, a secretary or treasurer for an organisation, or in giving advice to clients of an organisation.
Dependent student	In couple or one parent families, sons or daughters aged 15 to 19 attending school or aged 15 to 24 attending a tertiary educational institution full time (except those classified as husbands, wives or lone parents) are considered to be dependent students.
Expenses	Volunteers were asked for any expenses related to their voluntary work in the last 12 months. They were also asked whether reimbursement was available for expenses they had, irrespective of whether the volunteer chose to accept this reimbursement or not. Reimbursement could be either full or partial.
Field of voluntary work	Each organisation or group for which a volunteer worked was coded to one of the categories below, up to a maximum of three organisations. When a volunteer worked for more than three organisations in the preceding 12 months, the field of voluntary work was collected only for the three organisations for which the volunteer worked the most hours. The volunteer may work for more than one organisation in the same field . Some categories include multiple descriptions (for example, Law/justice/political). However, an organisation did not need to fall into all of these descriptions to be coded to the corresponding category. If an organisation fell into more than one category, it was coded according to the primary focus of the organisation. If the organisation was a subsidiary of a larger body, the organisational group was based on the subsidiary group, not the umbrella organisation. Subsidiary organisations have their own management committee and exist as a separate organisation or entity. For example, a church netball club is a separate entity from the church. The categories are:
<i>Arts/culture</i>	This category refers to the production of the arts, i.e. providing a service for others. Examples of arts/culture organisations include libraries; museums and galleries; historical associations; festivals. Small hobby and interest groups associated with craft, art and literature would be included under recreation, as they are primarily for the enjoyment/consumption of members and not for providing a service.
<i>Business/professional/union</i>	Organisations promoting, regulating and safeguarding business, professional and labour interests, including industry standards.

<i>Education/training/ youth development</i>	Organisations and activities administering, providing, promoting, conducting, supporting and servicing education, training and youth development.
<i>Emergency services</i>	Refers to those emergency services involved in search and rescue and disaster relief (not including emergency medical services). While emergency rescue may involve medical attention the overall aim is search and rescue. Similarly, while disaster relief can include a range of services (material assistance, accommodation, counselling), the broad focus of the organisation is disaster relief. Included are Red Cross Disaster Recovery Services and Salvation Army Disaster Services. First aid was included under health, not emergency services.
<i>Environmental/ animal welfare</i>	Organisations promoting and providing services in environmental conservation, pollution control and prevention, environmental education and health and animal protection.
<i>Foreign/international</i>	This refers to the focus of the organisations' activity rather than its origins. They promote greater intercultural understanding between people of different countries and historical backgrounds may provide during emergencies, promote development and welfare abroad e.g. exchange/friendship/cultural programs, development assistance associations, international disaster and relief organisations, international human rights and peace organisations.
<i>Health</i>	Organisations engaged in health related activities providing health care, both general and specialised services, medical research foundations and emergency health services, administration of health care services and health support services. Examples include specific health conditions support groups, hospitals and nursing homes, regional health services, AA, eating disorder groups, family planning, flying doctor.
<i>Law/justice/political</i>	Organisations and groups that work to protect and promote civil and other rights, or advocate the social and political interests of general or special constituencies, offer legal services and promote public safety (related to the law rather than emergency services). For example, Australian Consumers Association, the Civil Justice Research Centre, peak organisations and lobby groups such as the Councils of Social Service and Ethnic Communities Council.
<i>Religious</i>	Organisations promoting religious beliefs as their primary focus, administering religious services and rituals; includes churches, mosques, synagogues, temples, shrines, seminaries, monasteries and religious institutions.
<i>Sport/recreation/ hobby groups</i>	Organisations in general and specialised fields of sport, recreation and leisure; sports clubs and facilities; indoor and outdoor recreational facilities; racing and gambling; social leisure and hobby clubs; zoological, botanical, recreational parks and gardens; theme and amusement parks. Included here are hobby and general interest groups such as bird watchers' groups, book clubs, embroiderers' guilds, gardening clubs etc.
<i>Welfare/community</i>	Organisations and institutions providing human and social services to the general community and specific target population groups. Included are organisations whose work is for the wider social benefit of the general community without the provision of direct services, such as Apex and Rotary. Other organisations in Welfare/Community cover those giving material assistance, personal care and advice, such as Lifeline, the Smith Family, Brotherhood of St Lawrence, Legacy, Royal Blind Societies, Wesley Mission,

Meals on Wheels. Other examples include ethnic welfare groups, marriage guidance, community welfare services, information and referral services, community transport, neighbourhood centres, accommodation referral and advice, homes and shelters.

Other Organisations not elsewhere classified. In some tables and graphs, some of the above organisational groups may also have been included in this category due to small numbers of responses. This is indicated by a footnote.

How first became involved in voluntary work This item relates to the practical means by which the respondent first became involved in voluntary work, as opposed to their motivation. It was only collected for those who had done voluntary work for 10 years or less.

How long ago first volunteered This item refers to the length of time since the respondent first commenced voluntary work of any kind for any organisation (even a one off activity such as participating in a door-knock). Voluntary work done overseas is excluded.

Median hours per volunteer For any group of volunteers, the median hours worked in the preceding 12 months is the number of hours such that half the volunteers in the group worked less than that number, and half worked more than that number.

Median hours are used in this publication because the usual average (or mean) is a misleading measure of hours worked by the average volunteer. This is the case because most volunteers contributed relatively few hours, while a minority worked for a large number of hours.

Non-dependent child In couple or one parent families, sons or daughters aged 15 and over not attending school or a tertiary educational institution full time (except those classified as husbands, wives or lone parents) are considered to be non-dependent students.

Organisation or group An organisation or group is any body with a formal structure. It may be as large as a national charity or as small as a local book club. Purely ad hoc, informal and temporary gatherings of people do not constitute an organisation.

Reasons for becoming a volunteer Reasons for first deciding to become a volunteer were recorded for each volunteer. These do not necessarily relate to any specific organisation or reference period.

Relationship not determined Comprises usual residents of households where the relationship to others in the household was not determined; visitors to private dwellings; and persons enumerated in non-private dwellings.

Training The survey asked whether, over the preceding 12 months, the volunteer would have liked more training of any kind for the voluntary work they did. This item relates to any voluntary work done over the 12 months. It may therefore not apply to every organisation for which the volunteer worked. Training could range from informal on-the-job guidance through to opportunities to attend formal training courses.

Volunteer For the purposes of this survey, a volunteer was someone who willingly gave unpaid help, in the form of time, service or skills, through an organisation or group. The reference period was the 12 months prior to the survey.

The reimbursement of expenses in full or part (e.g. token payments) or small gifts (e.g. sports club T-shirts or caps) was not regarded as payment of salary, and people who received these were still included as voluntary

workers. However, people who received payment in kind for the work they did (for example, receiving farm produce as payment for work done on a farm, rather than cash) were not included as volunteers.

Volunteer rate For any group, the volunteer rate is the number of volunteers expressed as a percentage of the population aged 15 years and over in the same group.

VOLUNTARY WORK SURVEY, AUSTRALIA, JUNE 1995

DO YOU NEED ADDITIONAL DATA?

The Survey of Voluntary Work provides information on the incidence of volunteering for persons aged 15 years and over for the 12 months to June 1995.

A customised data service is available to meet special data requirements.

Information collected in the survey includes:

Number of volunteers

Number of organisations volunteered for

For each organisation a volunteer worked for

Field of voluntary work

Length of time volunteering for organisation

Activities

Hours of voluntary work

For Welfare/community or Health organisations

Groups assisted by organisation

For all volunteers

Whether would have liked more training

Type of training required

Expenses incurred

Whether reimbursement available for expenses incurred

Concerns about aspects of voluntary work

How long ago first volunteered

Reasons for becoming a volunteer

How first became involved in volunteering

Benefits gained through volunteering

Data can be classified by other variables including:

Age

Sex

Marital status

Relationship in household

Birthplace

States and Territories

Labour force status

Status in employment

Occupation

Industry

Main language spoken at home

Educational attainment

Field of study

To discuss your data requirements or for further information regarding this survey please contact Michael Clarke on (02) 268 4498.



For more information . . .

The ABS publishes a wide range of statistics and other information on Australia's economic and social conditions. Details of what is available in various publications and other products can be found in the ABS Catalogue of Publications and Products available from all ABS Offices.

ABS Products and Services

Many standard products are available from ABS bookshops located in each State and Territory. In addition to these products, information tailored to the needs of clients can be obtained on a wide range of media by contacting your nearest ABS Office. The ABS also provides a Subscription Service for standard products and some tailored information services.

National Dial-a-Statistic Line

0055 86 400

Steadycorn P/L: premium rate 25c/21.4 secs.

This number gives 24-hour access, 365 days a year, for a range of important economic statistics including the CPI.

Internet

<http://www.statistics.gov.au>

A wide range of ABS information is available via the Internet, with basic statistics available for each State, Territory and Australia. We also have Key National Indicators, ABS product release details and other information of general interest.

Sales and Inquiries

Keylink STAT.INFO/ABS
X.400 (C:Australia,PUB:Telememo,O:ABS,FN:STAT,SN:INFO)
Internet stat.info@abs.telememo.au

National Mail Order Service (06) 252 5249
Subscription Service 1800 02 0608

	Information Inquiries	Bookshop Sales
SYDNEY	(02) 268 4611	268 4620
MELBOURNE	(03) 9615 7755	9615 7755
BRISBANE	(07) 3222 6351	3222 6350
PERTH	(09) 360 5140	360 5307
ADELAIDE	(08) 237 7100	237 7582
HOBART	(002) 205 800	205 800
CANBERRA	(06) 252 6627	207 0326
DARWIN	(089) 432 111	432 111



Client Services, ABS, PO Box 10, Belconnen ACT 2616





© Commonwealth of Australia 1996

Recommended retail price: \$16.00



2444100001952
ISBN 0 642 20778 X